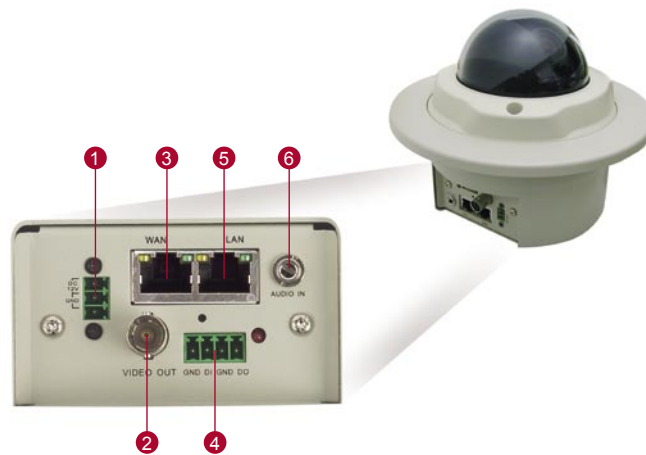


CAM-7100 Series

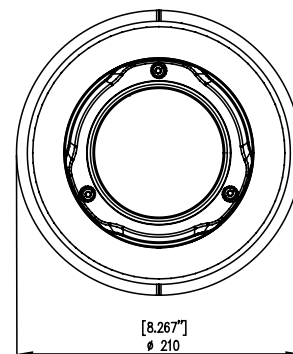
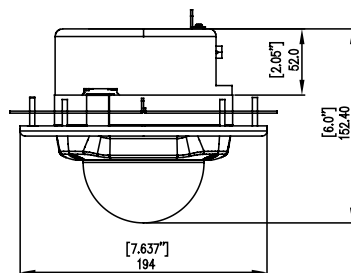


- 1/3" SONY SuperHAD / EXviewHAD CCD with 440K/380K pixels
- Min. 0.14 Lux at F=1.6 (30 IRE, SAGC ON)
- Backlight Compensation, Auto Iris Control, Auto White Balance supported
- Vandal proof
- Flush mount
- MPEG-4 ASP compliant compression
- CIF up to Full D1 resolution at 30/25 FPS
- Dual MPEG-4 video stream output via LAN and WAN (PPPoE supported) ports at the same time
- QoS enabled (L3) video streaming
- One-way audio supported
- Power Over Ethernet (IEEE 802.3af) supported (CAM-71x1) or AC 24V power source supported (CAM-71x2)



- | | |
|-------------------------------|--------------------------|
| ① DC 12 V/AC 24 V power input | ④ Digital input / output |
| ② Analog video output | ⑤ LAN port |
| ③ WAN port | ⑥ Audio input |

DIMENSION DIAGRAM



Unit: mm [inch]

CAM-7100 Series

PRODUCT SPECIFICATION

		CAM-7100	CAM-7120
Image	Device	Interline Transfer SONY Super HAD CCD	Interline Transfer SONY ExviewHAD CCD
	Size	1/3 inch	
	Effective Pixels (HxV)	811 x 508 (NTSC); 795 x 596 (PAL)	
	Horizontal Resolution	480 TVL	
Min. Scene Illumination	Color	0.5 Lux at F1.2 (30 IRE, SAGC ON)	0.4 Lux at F1.6 (30 IRE, SAGC ON)
	B/W	N/A	0.14 Lux at F1.6 (30 IRE, SAGC ON)
Lens	Focal Length	3.5 ~ 8 mm	
	Lens Mount	Board lens	
Camera Angle Adjustment	X (Panning)	± 180°	
	Y (Tilting)	90°	
	Z (Rotating)	360°	
Synchronization	Sync. System	Internal / Line-lock (CAM-7102)	Internal / Line-lock (CAM-7122)
Functions	Motion Detection	Yes (3 windows)	
	Electronic Shutter	1/60 ~ 1/10,000 sec. (NTSC); 1/50 ~ 1/10,000 sec. (PAL)	
	Fixed Shutter	1/60, 1/100, 1/250, 1/500, 1/1000, 1/2000, 1/4000, 1/10,000 sec. (NTSC) 1/50, 1/120, 1/250, 1/500, 1/1000, 1/2000, 1/4000, 1/10,000 sec. (PAL)	
	BLC	Auto detect ON/OFF; Histogram plus 255 area windows weight	
	AGC	Auto Gain 0 ~ 36 dB	
	White Balance	ATW (2500°K ~ 9500°K), AWB, PTL	
	Flickerless	1/100 sec. (NTSC); 1/120 ~ 1/100,000 sec. (PAL)	
	Auto iris control	1/60 sec. (NTSC); 1/50 sec. (PAL)	
	S/N Ratio	S/N Ratio	Better than 48 dB
Video (Compression)	Compression	MPEG-4 ASP compliant	
	Picture Resolution	Full D1 (720x480 in NTSC, 720x576 in PAL); CIF (352x240 in NTSC, 352x288 in PAL); QCIF (160x112 in NTSC, 176x144 in PAL)	
	Bit Rate	28 K ~ 3 M bps	
Video Output	Multi-stream	Up to 4 configurable frame rate/bit rate stream for preview and recording	
	Composite Output	CVBS, 1.0Vp-p with 75 Ω loading, BNC Connector	
Audio Input	Compression	8 kHz, Mono, PCM	
	Audio Line input	Unbalanced, 1.0 Vpp, 1Vrms, 3.5 mm Jack	
Alarm	Input	1, TTL, terminal block	
	Output	1, TTL, terminal block	
External I/O	Reset Button	Factory default	
	LED	System status	
Casing	Vandal Proof	Vandal proof supports, durability up to 702 KgF	
	Mount Types	Flush	
Network	LAN Port	Ethernet(10/100Base-T), RJ-45 connector	
	WAN Port	Ethernet(10/100Base-T), RJ-45 connector	
	Protocol	TCP, UDP, RTP, RTSP	
Software	Web Browser	Microsoft Internet Explorer 6.0 or above	
	SDK	AtiveX control, C SDK	AtiveX control, C SDK
	Security	Password protection : configured by the administrator	
Operating	Temperature	5 ~ 50 °C (40 ~ 122 °F)	
Power	Power Requirement	DC 12 V ±10% (CAM-7100) PoE (IEEE802.3af) with Class 3 (CAM-7101) AC 24 V ±10% (CAM-7102)	DC12V ±10% (CAM-7120) PoE (IEEE802.3af) with Class 3 (CAM-7121) AC24V ±10% (CAM-7122)
	Power Consumption	9 W	
Physical	Dimensions (ØxH)	210 mm x 152.4 mm (8.27" x 6.0")	
	Weight	1,310 g (2.9lb)	

ORDERING INFORMATION

Model Name	NTSC	PAL	D&N	DC 12 V	DC 12 V / PoE	DC 12 V / AC 24 V
CAM-7100N	V			V		
CAM-7100P		V		V		
CAM-7101N	V				V	
CAM-7101P		V			V	
CAM-7102N	V					V
CAM-7102P		V				V
CAM-7120N	V		V	V		
CAM-7120P		V	V	V		
CAM-7121N	V		V		V	
CAM-7121P		V	V		V	
CAM-7122N	V		V			V
CAM-7122P		V	V			V

* All specifications are subject to change without notice.

* All brand names and registered trademarks are the property of their respective owners.